



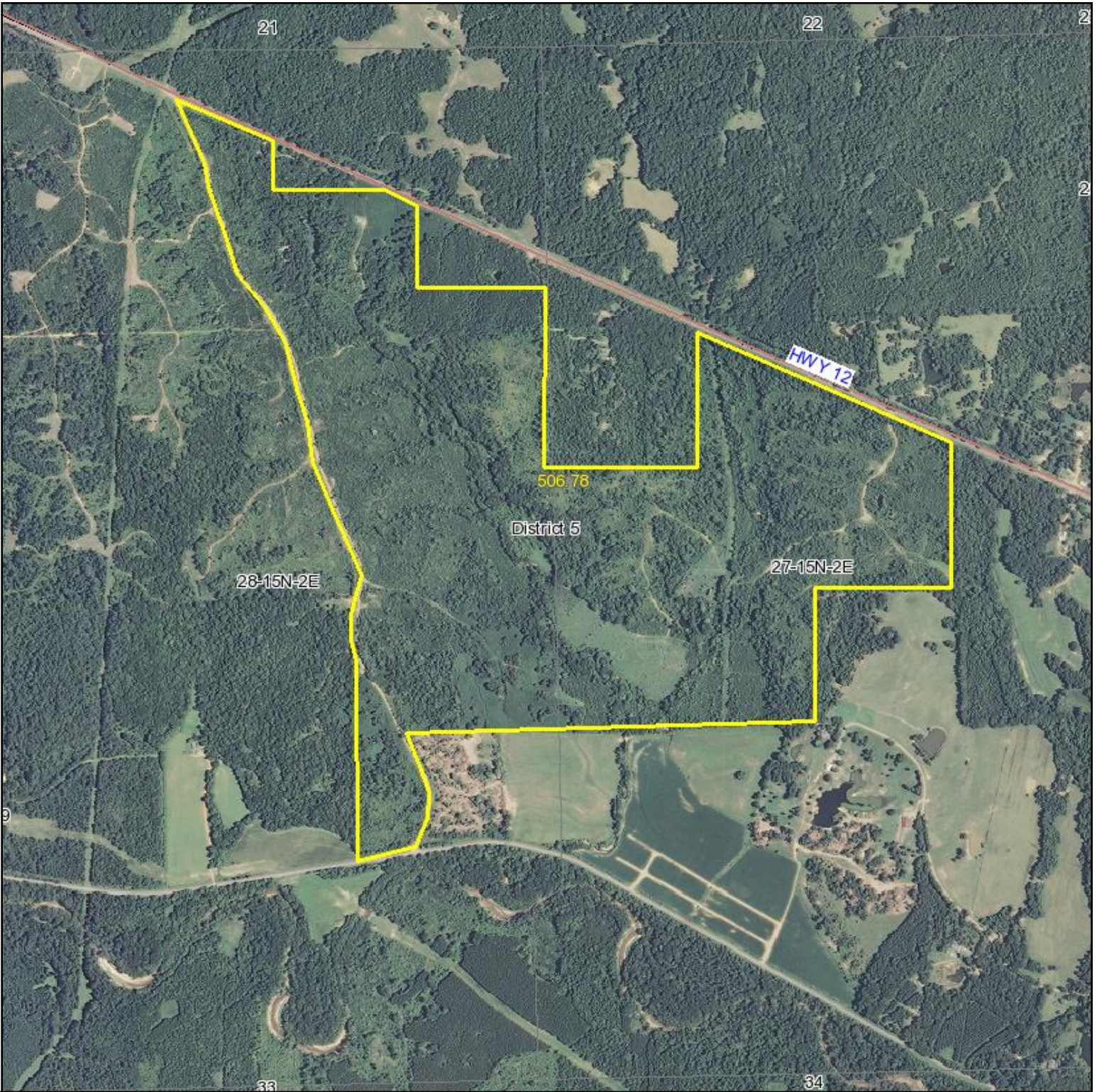
For Sale
505+/- Acres
Holmes County, MS

- Location:** Two miles west of Lexington, MS
- Price:** \$1,007,475
- Access:** Frontage on MS Hwy 12, Ferguson Rd. and Howard Rd.
- Other:** Ready to hunt. Includes storage container and shed, and enclosed deer stands. Established wildlife food plots and an extensive trail system on the property.
- Pine plantation, cutover, five year old planted hardwoods, mature hardwood in Streamside Management Zone (SMZ)
- Wildlife:** Excellent deer and turkey hunting



Rob N. Stockett, III, Broker
P.O. Box 751 • Madison, Mississippi 39130
Phone: 601-853-0032 • Fax: 601-898-1222

Aerial Map



Maps provided by:



©AgriData, Inc. 2011

www.AgriDataInc.com

28-15N-2E
Holmes County
Mississippi

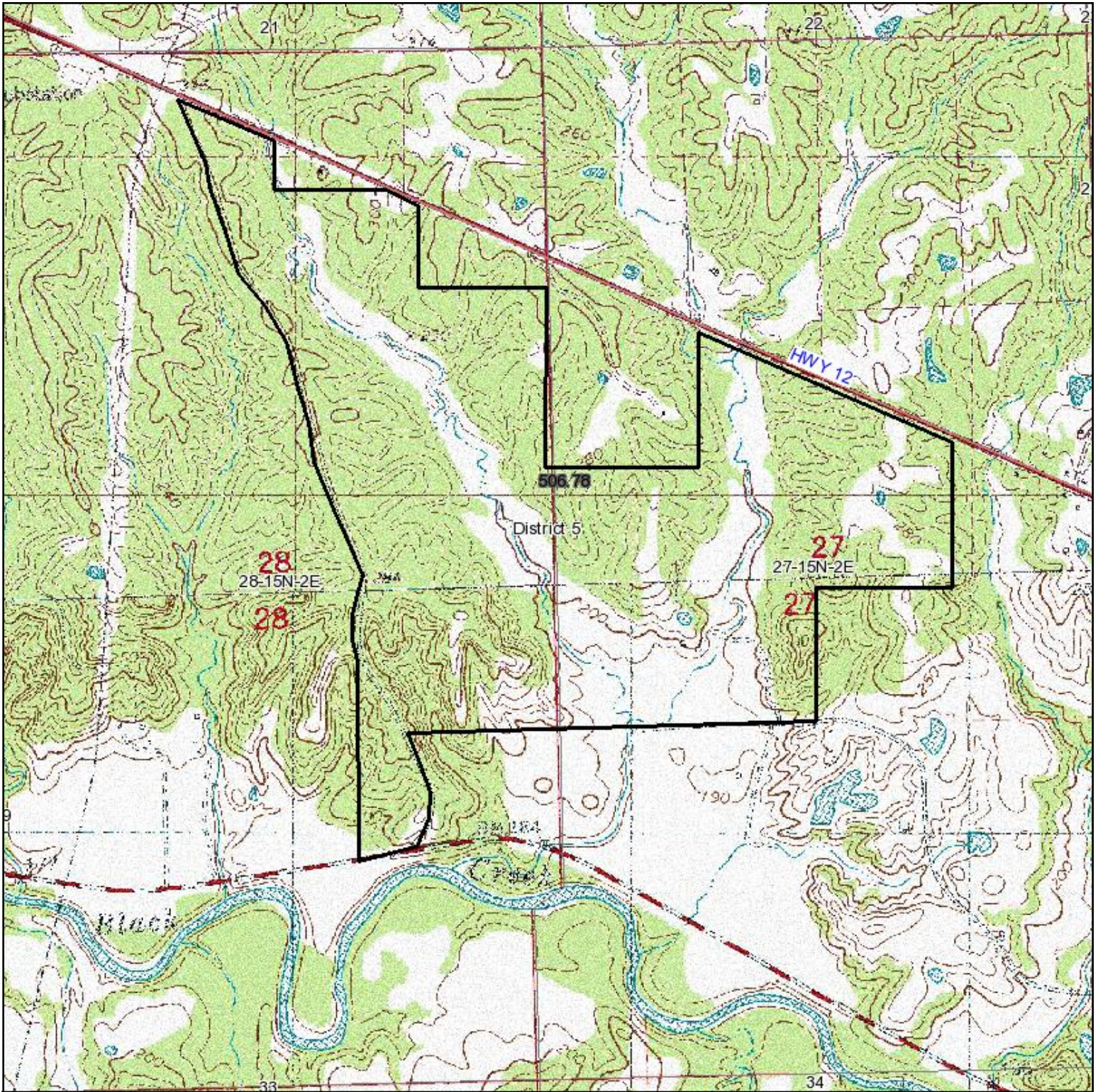
map center: 33° 7' 34.2, 90° 5' 14.96

scale: 18404



4/15/2011

Topography Map



Maps provided by:



©AgriData, Inc. 2011

www.AgriDataInc.com

28-15N-2E
Holmes County
Mississippi

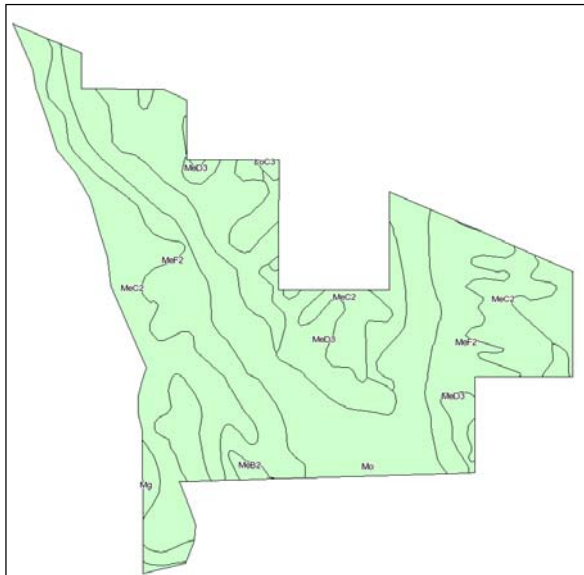
map center: 33° 7' 34.2, 90° 5' 14.96

scale: 18404



4/15/2011

Soils Map



State: **Mississippi**
 County: **Holmes**
 Location: **027-015N-002E**
 Township: **District 5**
 Acres: **506.8**
 Date: **4/15/2011**



Fsa borders provided by the Farm Service Agency as of May 23, 2008.
 Soils data provided by USDA and NRCS.



Maps provided by:
surety
 ©AgriData, Inc 2008
 www.AgriDataInc.com

Code	Soil Description	Acres	Percent of field	Non-Irr Class	Bahiagrass	Common bermudagrass	Corn	Cotton lint	Improved bermudagrass	Oats	Pasture	Soybeans	Tall fescue	Wheat
MeF2	Memphis silt loam, 12 to 40 percent slopes, eroded	195.1	38.5%	Vlle		4								
MeC2	Memphis silt loam, 5 to 8 percent slopes, eroded	136.7	27.0%	IIle		7	85	750	9			35	7.5	40
Mo	Morganfield silt loam, occasionally flooded	123.2	24.3%	IIw	9.5		115	950	12	75		45	10	
MeD3	Memphis silt loam, 8 to 12 percents slopes, severely eroded	39.5	7.8%	Vle		7	85	750	9			35	7.5	40
Mg	Memphis-Gullied land complex, 5 to 40 percent slopes	6.7	1.3%	Vle										
LoC3	Loring silt loam, 5 to 8 percent slopes, severely eroded	3	0.6%	IVe			85	700			7.5	35		45
MeB2	Memphis silt loam, 2 to 5 percent slopes, eroded	2.6	0.5%	Ile		7.5	95	800	10			40	8.5	45
Weighted Average					2.3	4	58.5	500	6.1	18.2	0	23.5	5.1	14.4





